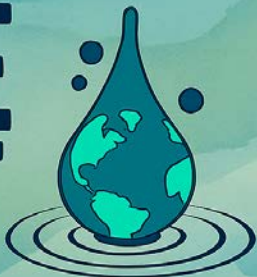


RIPPLE EFFECT



ESE SYMPOSIUM 2025 Creative Works Competition

- Submit your creative works inspired by the prompt: “How can we connect research and everyday life through creativity?”
- Accepting all related visual arts, graphics, infographics, short videos, etc!
- Submit your crafts electronically to esesymposium@purdue.edu or in person on September 26 between 9-11am

**LOCATION: Discovery & Learning
Research Hall Rm 131**

TIME: 2pm – 3pm

**Prizes available for graduate
and undergraduate students!**

